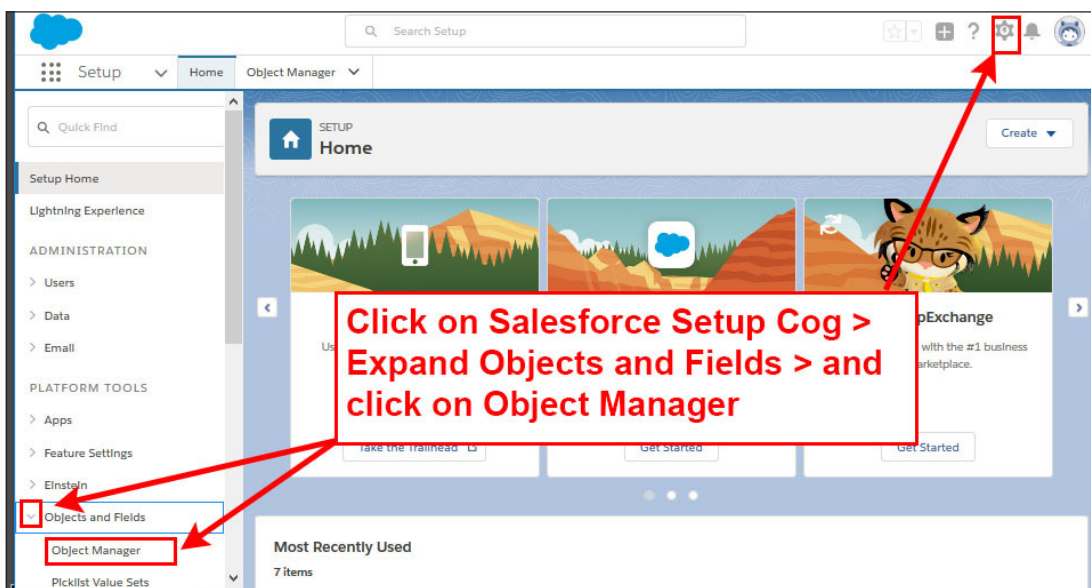
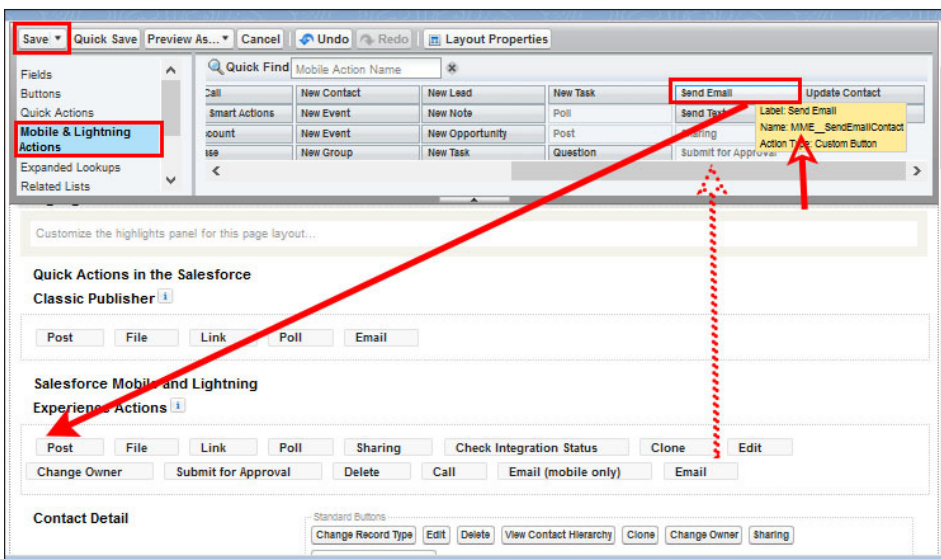
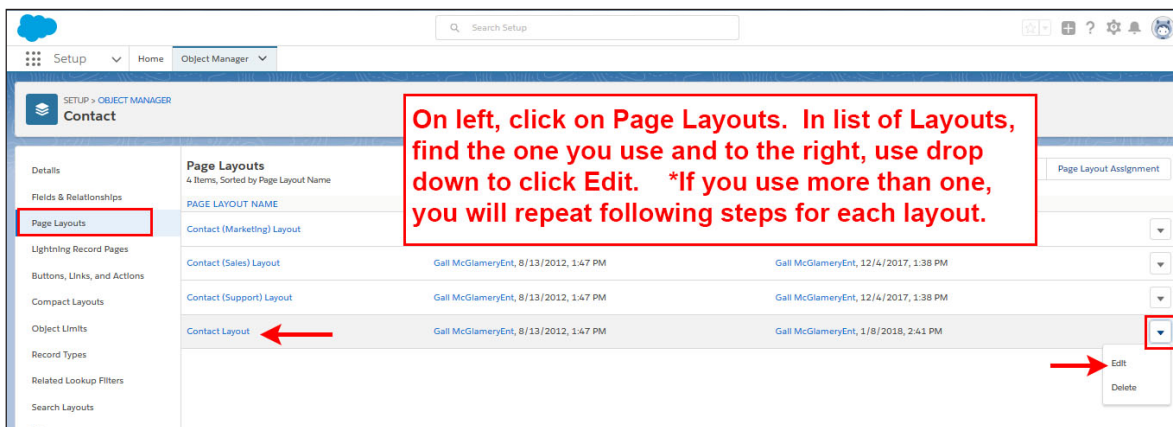


Convert to Match My Email's Send Email button for Reply, Reply All & Forward



As an example, let's add the Send Email button to a Contact record. Click on the label for Contact.



In top left, scroll to click Mobile & Lightning Actions. To right, find the Send Email button with MME in name, drag down to Salesforce Mobile & Lightning Actions placing in front of Post. You can also drag the Salesforce Email button (dotted line) back up to top to remove. Click SAVE. Repeat for other layouts and/or objects.